

DESIGNING FOR
RESILIENCE IN THE
HIGH DESERT

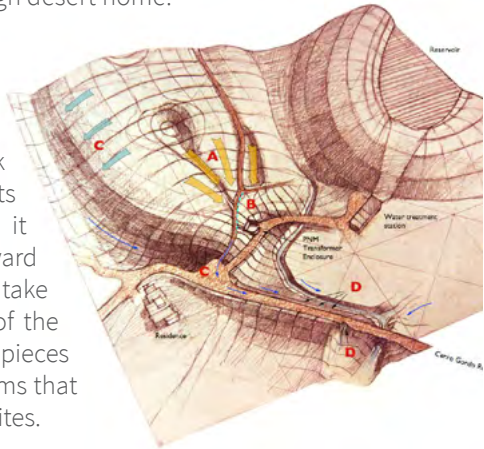


OVERVIEW

The desert is our home. It is delicate and it can be treacherous. When we build here without regard for how the elements sweep across the landscape, it can be unforgiving. Adaptive Terrain Systems (ATS) has decades of experience understanding how it works. ATS can help you care for your site – balancing your needs with what works in our high desert home.

OUR APPROACH

Adaptive Terrain Systems approaches every site as a watershed. We look at that watershed in its larger context – whether it is a parking lot, a backyard or an 80 acre ranch. We take into account all aspects of the terrain, and connect the pieces to create networked systems that nourish healthy, resilient sites.



WHY IT MATTERS Adaptive sites reduce maintenance costs and add value as they mature. Like any wise investment, these sites pay repeated dividends both for the environment and your bottom line.

“Every landscape tells a story. When you step into it you don’t know where you are. You have to pay attention to figure out the narrative. Then you can write the next chapter.” - Jim Brooks

WHAT WE DO

We provide comprehensive analysis, consultation, design and on-site construction observation for arid lands in the southwest.

Our services include:

- Terrain Design
- Site Planning and Design
- Soil Remediation
- Site Assessment and Consultation
- Construction Observation
- Policy Consultation
- Project Layout
- Consultation for MS4 and SWPPP Permitting and Compliance
- Maintenance Schedule Design and Inspection
- Trainings and Workshops

We specialize in:



EROSION
CONTROL



LAND
REHABILITATION



LOW IMPACT
DESIGN



STORMWATER
MANAGEMENT



“We can help you solve your problem, but we’d rather help you get it right the first time. Experience shows us that rebuilding or retrofitting after a site failure is always more expensive than getting it right from the start.”

HOW YOU BENEFIT



A well designed Terrain System...



builds soil and stores water, sustaining life.



protects site developments from being overwhelmed by extreme weather conditions.



has the easy beauty of a naturally occurring landscape.

WHAT'S YOUR CHALLENGE?

STRUCTURES ARE FLOODING

ROAD AND OTHER SITE DEVELOPMENTS ARE BEING UNDERCUT BY EROSION

ROADS AND STRUCTURES ARE BEING INUNDATED BY SEDIMENT

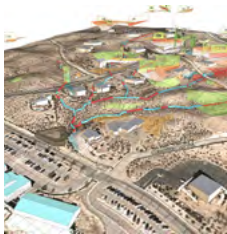
VEGETATION IS DYING

SITE DOES NOT HOLD WATER OR HOLDS IT FOR TOO LONG

RANGELAND AND WATERSHED IS UNHEALTHY AND UNPRODUCTIVE

MS4 (MUNICIPAL SEPARATE STORM SEWER SYSTEM PERMIT)
AND SWPPP (STORM WATER POLLUTION PREVENTION PLAN)

SITE MAINTENANCE COSTS ARE SPIRALING OUT OF CONTROL



LET US HELP

A man wearing a light-colored bucket hat and a blue and white plaid long-sleeved shirt is crouching in a desert landscape. He is looking down at the soil in front of him, with his hands resting on the ground. The background shows a dry, hilly desert under a clear blue sky.

Adaptive Terrain Systems

Over the past 26 years we have built a unique, field tested design approach that adapts the built environment to the natural forces of the desert landscape.

We offer our clients an intimate knowledge of southwest terrain and expertise in employing organics to build soil and protect your site.

We view problems as opportunities and take pride in addressing the most difficult site challenges that our clients face.

WHO WE SERVE

- Municipalities/Government/Utilities
- Commercial and Industrial Operations
- Low Impact Developers
- Green Architects
- Non-profits and NGOs
- Homeowners
- Educators
- Landscape Contractors

Our clients include



- Public Service Company of New Mexico (PNM)
- La Serena Neighborhood Association
- New Mexico Department of Transportation (NMDOT)
- Sandoval County Arroyo Flood Control Authority (SCAFCFA)
- Edgewood Soil and Water Conservation District (ESWCD)
- East Torrance Soil and Water Conservation District (ETSWCD)
- Ciudad Soil and Water Conservation District (CSWCD)
- Bernalillo Public Schools Education Foundation, Placitas Elementary
- New Mexico Recycling Coalition (NMRC)
- US Forest Service, Collaborative Forest Restoration Program (CFRP)

WHO WE ARE



James Brooks, founder and president of *Soilutions Inc.*, and principal of *Adaptive Terrain Systems*, has provided consultation, design and installation services for soil and water conservation for over 27 years. Widely respected in New Mexico as an erosion control expert, he has designed and installed storm water, erosion control and landscape systems at private, commercial, and governmental sites throughout the state. As an organics recycling expert, he has developed innovative applications for compost and mulch products in the arid Southwest. Trained as a permaculture designer and certified as a permaculture instructor, James uses permaculture principles as a guide to the preservation of natural resources, and the creation of healthy terrain systems. James Brooks has been an active member of the *International Erosion Control Association* since 1992 and is trained in Stormwater Pollution Prevention Plans, Erosion & Sediment Control for Construction Sites, and Slope Protection. jim@soilutions.net



Michael Young has worked as a product designer, manufacturing and tooling engineer, machine designer, process engineer, general and technical illustrator, steel fabrication designer, and terrain systems designer for 35 years. He is an autodidact who approaches almost everything as a drawing problem. Michael developed the design language that translates *Adaptive Terrain Systems* design principles into analytic and actionable tools for clients, design professionals, and contractors. He currently serves in operations and design documentation for ATS. michael.young@soilutions.net

P.O. Box 1479 Tijeras, N.M. 87059

office (505) 877-0220

fax (505) 452-9457

www.soilutions.net

DESIGNING FOR
RESILIENCE IN THE
HIGH DESERT



The information contained in this document is made available solely to prospective corporate and community partners. No portion of this document shall be reproduced without the expressed written permission of Soilutions, INC. © 2015 All rights reserved.