

New Mexico Compost Products™

Retail Price List March 2019

Soils and Soil Amendments

Custom blends are available on request. Please call for pricing.

Sod and Shrub Compost

The same compost we've been making for years but with a greater diversity of organic inputs. Great for landscapes, orchards, lawns, or a budding medicinal business. Screened to 1/2".

\$40/cu yd

Premium Compost™ Check For Availability

Soilutions' flagship soil amendment, known and loved by local certified organic growers for over 20 years. Made by Soilutions from green waste, manures (no human manure), and other select feedstocks and composted for a minimum of 12 months.

Approved for use on certified organic farms in New Mexico. Screened to 1/2".

One cubic foot bags \$10.50

\$48/cu yd

Topsoil Blend

New Mexico's favorite soil for raised planter beds. Use when little or no onsite soil is available for amending. A mixture of native sandy loam and compost.

\$52/cu yd

Enriched Planting Mix

Our Topsoil Blend with twice the compost for a growing medium with improved structure and porosity.

\$60/cu yd

Potting Soil #1 – PS1

A well-drained potting soil, designed for working with native and native-adapted plants. Red cinder (3/8" -), Pumice (5/16"), Pecan shells, and compost.

\$60/cu yd

Potting Soil #3 - PS3, aka "No Float"

A well-drained potting soil good for small container gardening. Also a smart choice for creating "sponges". Pumice (5/16"), sand, composted woody materials (1"-), and compost.

\$60/cu yd

Mulches

Use mulch to retain moisture, prevent weed seed germination, and feed the soil ecosystem. Soilutions recommends applying mulch at a 3" minimum depth for maximum benefits.

Screened Mulch

An economical choice for covering large areas. Chocolate brown color for a fecund appearance. Made with recycled woody materials, sized to 1".

\$5/cu yd

Forest Floor Mulch™

Our favorite for mulching trees and ornamental flower beds – immediately sets up the microbial environment necessary to provide a slow release of nutrients. A blend of compost and woody materials, natural brown color. 2" to fines.

\$37/cu yd

Native Mulch

The best for slope stabilization and areas where a natural look is desired. Long lasting, excellent for high traffic areas, and stable on windy sites. Composted to kill weed seeds. Coarsely ground woody materials 6" strips to fines.

\$37/cu yd

Wood Mulch

Tidy looking blonde colored mulch, chipped flat for a nice walking surface. 2" to 1/4".

\$37/cu yd

Black and Tan Mulch

Can't decide between screened mulch and wood mulch? Get a blend of both! Sized 1"-2".

\$40/cu yd

Playground Mulch

PlaySoft brand, IPEMA certified to conform to ASTM standard specification for engineered wood fiber. Soft material, great for playgrounds and dog runs. 3/4" to fines.

\$42/cu yd

Pecan Shell Mulch

Red pecan shell pieces, direct from southern New Mexico. A beautiful, sustainable alternative to gravel. Those who use it love its weed suppressing abilities. Looks great in xeriscape design. 1" to fines.

\$51/cu yd

Mulches made from recycled ingredients will have debris. While Soilutions goes to great effort to eliminate these small pieces of plastic and metal from our product, it is impossible to do so completely. If this is a concern to you, we offer products made from virgin materials.

Delivery Available (3 cubic yard minimum) – Please call for delivery charges to your area.

Also Available from Soilutions

Compost Worms

Commonly known as red wigglers, scientifically known as *eisenia fetida*, these worms turn organic matter into a rich soil amendment. They like to inhabit decomposing organics, so don't throw them in your garden!

Compost Worms

A bag of worms gives you 100 + worms, in bedding. These guys reproduce quickly, so a bag should get you started.

\$15.00

Worm Colony

Approximately 1 lb of compost worms plus cocoons, castings, and bedding. Comes in 1 ft³ bag.

\$28.00

Books, Tools, Gear and Services

Gift certificates also available.

Worms Eat My Garbage

How to set up/maintain home worm composting systems. 100 pages.

\$20.00

Rainwater Harvesting for Drylands and Beyond, vol.1

Guiding principles to welcome rain into your life and landscape, by Brad Lancaster.

\$25.00

Rainwater Harvesting for Drylands and Beyond, vol.2

An introduction to water-harvesting earthworks, by Brad Lancaster

\$32.95

Skidger

Your best friend in weeding. The Skidger is a well-designed, durably built gardening tool with a pointed steel blade sharpened on front and back to maximize your efforts. Think of it as a hoe, or a hula hoe on steroids.

\$24.99

Soilutions T-shirts

Join the Soilution! Our t-shirts are printed on a soft cotton blend - stylish and smart.

\$18.00

Soilutions Gloves

Durable and soft cowhide leather gloves.

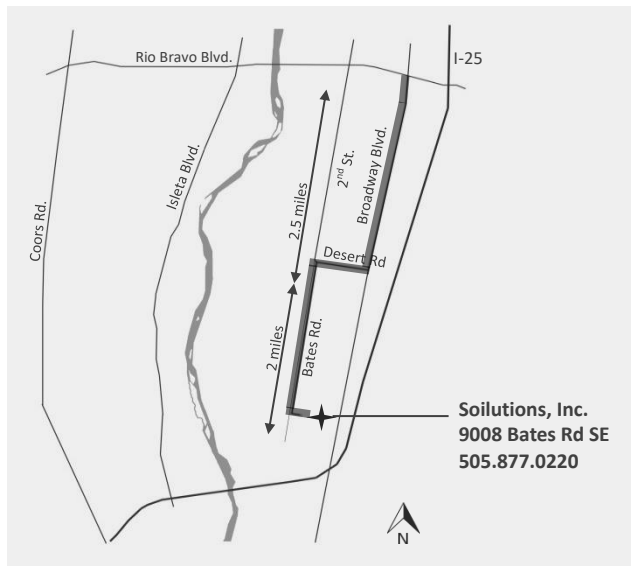
\$12.00

Greenwaste Recycling

Soilutions Organics Recycling Facility diverts organic material from the waste stream, and recycles it into compost and other recycled products. Contact us, or visit our website, to find out what we can and cannot recycle.

\$6/cu yd

To Find Soilutions



From Rio Bravo and Broadway go south 2.5 miles to Desert Rd. (stoplight). Go right (west) ½ mile. Take the first left (south) onto Bates Rd. Continue south, along the east side of the railroad tracks, 2 miles to the end of the pavement. When pavement ends, turn left (east) up the dirt road 500 feet. We are on the left.

Ask us about our compost distributors in the Albuquerque area.

The Soilutions family is three divisions working towards a common goal - to return the value of organic material to our depleted desert soils. Soilutions Inc. offers a suite of services to accomplish this, including Organics collection via **Food Waste Management**, Organics processing at our **Soilutions Compost Facility**, and Organics utilization via **Adaptive Terrain Systems**.